



14 Lough Wood Crescent, Scotby, Carlisle, CA4 8FT

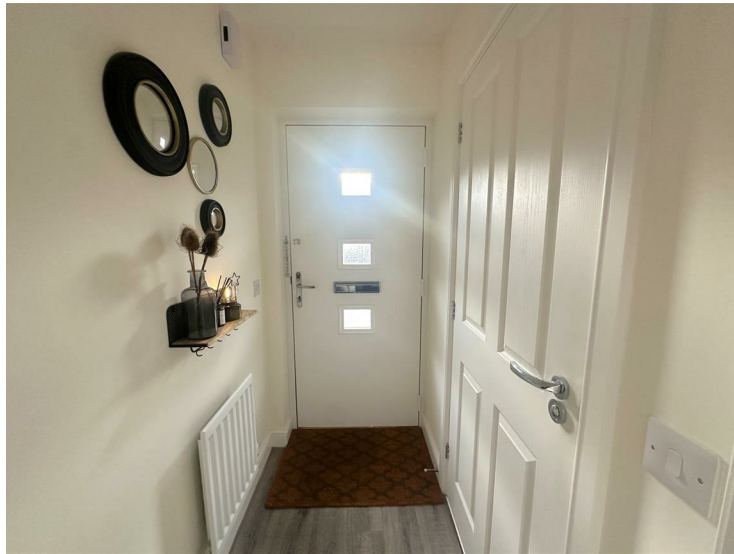
£143,500

Vicinity Homes are delighted to offer to the market this immaculately presented, two double bedroom mid link house situated within a cul-de-sac location on the Story Homes Lough Wood Crescent Development in Scotby. The property is close to a range of local amenities within the village including a Pub, play park and popular Primary School. There is a regular bus route nearby and the property also has excellent access to the A69, M6 and into Carlisle. The accommodation briefly comprises of an entrance hallway, cloakroom/WC, lounge and a modern dining kitchen with a range of integrated appliances and french doors to the garden. To the first floor there are two double bedrooms and a modern bathroom. The property also benefits from double glazing, central heating, block paved on site parking for two vehicles and a garden to rear. Viewing is absolutely essential to fully appreciate the accommodation on offer. The property is offered to the market with no onward chain. The property is part of The Council's Affordable Housing Scheme and is offered to the market at 70% of the full property value. A purchaser will need to have a local connection to the area to purchase the property.

Directions

Head East along the A69 and turn right into Scotby. Continue on this road through the village. Turn right onto Lough Wood Crescent. The property is situated in a cul-de-sac and can be identified by our "For Sale" sign.

Entrance Hallway



Approached by a door to front, incorporating a radiator.

Cloakroom/WC 5'11" x 3'1" (1.815m x 0.952m)



Incorporating a wash hand basin, WC, double glazed obscured window to front, radiator, tiled splash areas, inset ceiling light and extractor fan.

Lounge 15'0" x 13'8" (4.588m x 4.189m)

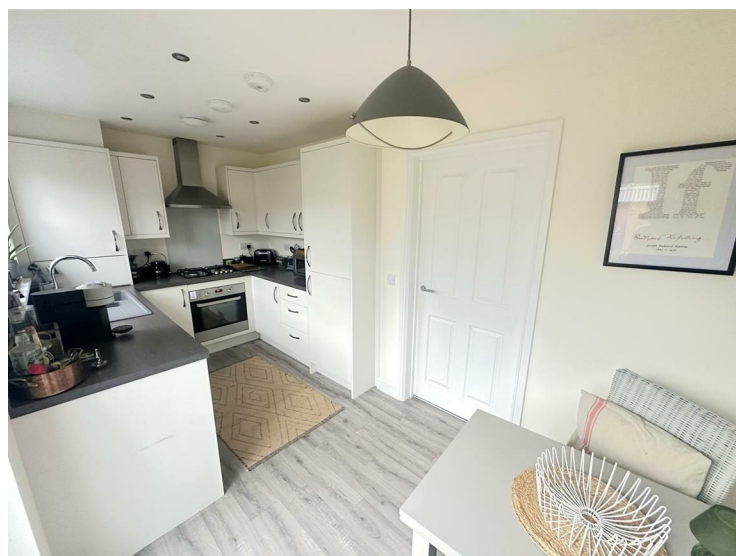


Incorporating a double glazed window to front, radiator, under stairs storage cupboard and stairs to the first floor.





Dining Kitchen 15'1" x 7'8" (4.598m x 2.360m)



Incorporating a range of modern fitted wall and base units with complementary work surface over, integrated oven and integrated hob with cooker hood over. Integrated dishwasher, 1.5 sink unit with mixer tap, integrated fridge, integrated freezer and an integrated washing machine. Double glazed french doors to rear, double glazed window to rear, radiator, inset ceiling lights and extractor fan.



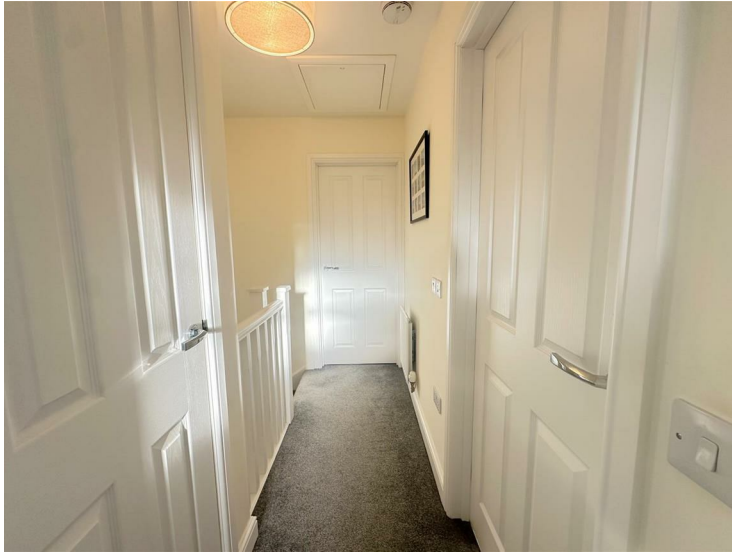
www.vicinityhomes.co.uk

Blackdyke Road, Kingstown Industrial Estate, Carlisle CA3 0PJ

T: 01228 599011

E: sales@vicinityhomes.co.uk

First Floor Landing



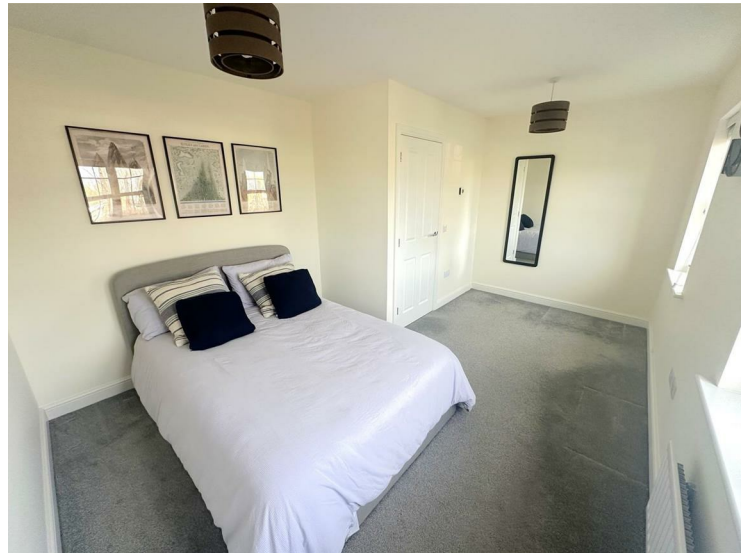
Incorporating a built in storage cupboard and loft access.



Bedroom One 15'0" max x 10'3" max (4.574m max x 3.148m max)



A double bedroom incorporating two double glazed windows to rear and a radiator.

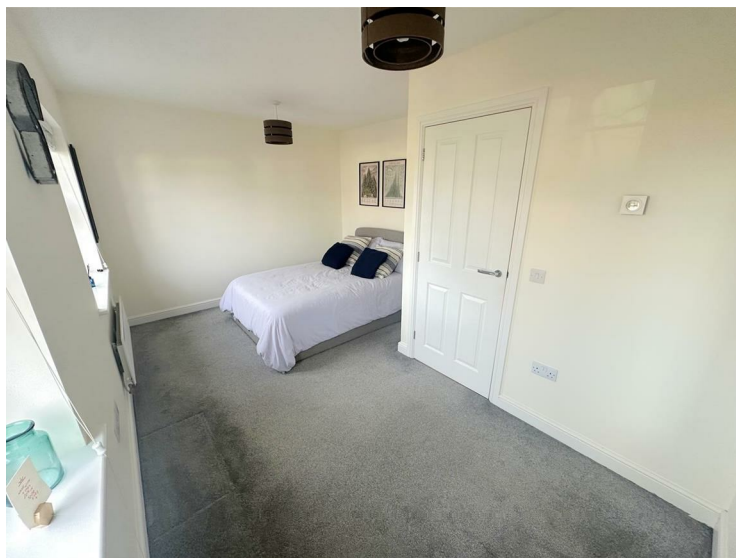


www.vicinityhomes.co.uk

Blackdyke Road, Kingstown Industrial Estate, Carlisle CA3 0PJ

T: 01228 599011

E: sales@vicinityhomes.co.uk



Bedroom Two 11'3" x 8'0" (3.439m x 2.443m)



A double bedroom incorporating a double glazed window to front and a radiator.

Bathroom 6'6" x 5'7" (1.989m x 1.703m)



Incorporating a modern three piece suite comprising of a bath with waterfall shower over & shower attachment, wash hand basin and WC. Double glazed obscured window to front, radiator, tiled splash areas, inset ceiling light and extractor fan.



Outside



The property is approached by block paved on site parking for two vehicles. To the rear of the property there is an enclosed garden with patio seating area, lawn area, shillied area, raised flower & shrub beds, timber decked seating area and an outside tap. There is gated access to the side lane which has access to the front of the properties.



www.vicinityhomes.co.uk

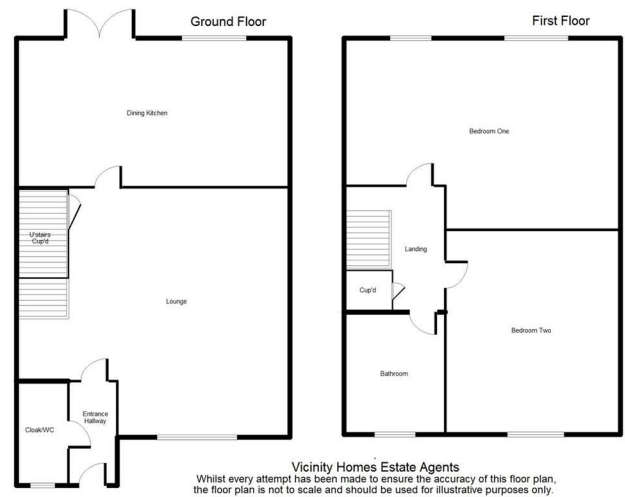
Blackdyke Road, Kingstown Industrial Estate, Carlisle CA3 0PJ

T: 01228 599011

E: sales@vicinityhomes.co.uk



Floor Plan



Please note, the floor plan is not to scale and should be used for illustrative purposes only.

EPC Band B

<https://find-energy-certificate.service.gov.uk/energy-certificate/9330-3456-4090-2400-5045>

Tenure

The property is Freehold.

Council Tax

The property is in Council Tax Band B.

Estate Agents Note

We have been informed there is an annual development upkeep fee payable which was £295.00 for the year.

Viewings

Strictly through arranged appointments by Vicinity Homes. To arrange a viewing, please contact: T: 01228 599011 or E: sales@vicinityhomes.co.uk.

Referral Fees

We routinely refer potential purchasers to Mortgage Advisers - Fisher Financial Associates. It is your decision whether you choose to deal with Fisher Financial Associates. In making that decision, you should know that we will receive commission from the company worth approximately £50 depending on any business written.

Referral Fees - Vicinity Homes work with preferred conveyancers for a house sale or purchase. You are under no obligation to use their services. Should you choose to use them, Vicinity Homes Estate Agents will receive a referral fee of between £120.00 to £150.00 on completion of a sale or purchase.

Misrepresentation Act 1967

These particulars, whilst believed to be accurate, are set out for guidance only and do not constitute any part of an offer or contract - intending purchasers should not rely on them as statements or representations of fact, but must satisfy themselves by inspection or otherwise as to their accuracy. All electrical appliances mentioned in these details have not been tested and therefore cannot be guaranteed to be in working order.



www.vicinityhomes.co.uk

Blackdyke Road, Kingstown Industrial Estate, Carlisle CA3 0PJ

T: 01228 599011

E: sales@vicinityhomes.co.uk

Mailing List

To register your buying information and receive updates on all our available properties, please contact Vicinity Homes on 01228 599011 or via email to sales@vicinityhomes.co.uk.

Free, No Obligation Valuation

We would be pleased to provide you with a free, no obligation valuation for your home. Please contact Vicinity Homes on 01228 599011 or via email to sales@vicinityhomes.co.uk to arrange an appointment.

